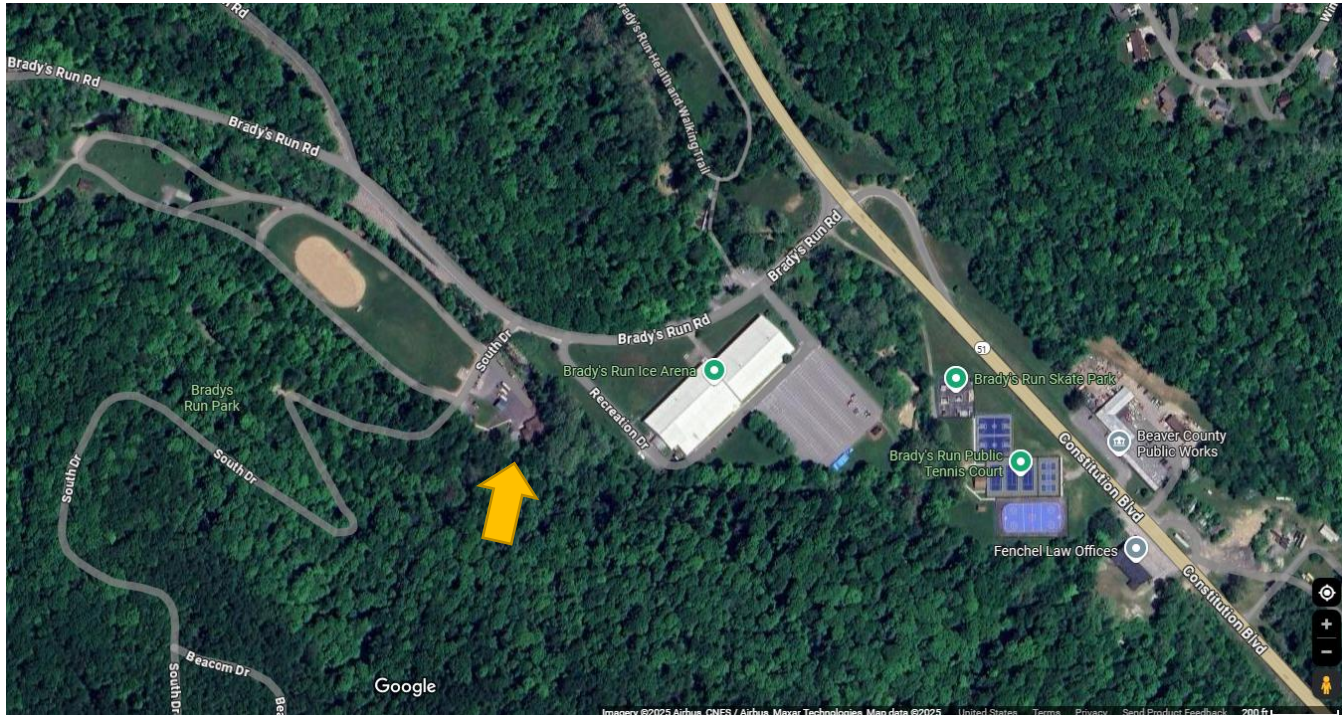


Beaver County Recycling Center at Brady's Run

Where to find us: 3rd Left on Brady's Run Road, off of Rt. 51 (just beyond Ice Arena)

Our address is: Brady's Run Recycling Center, 139 Brady's Run Road, Beaver Falls, PA 15010



RECYCLING INSTRUCTIONS:

PLEASE NOTE – All Recycling materials may be dropped off during operating hours: *Leaving materials at the Center when it is not open will result in a littering fine. Help us keep Brady's Run Park clean.*

Monday, Tuesday, Thursday – (8:30 AM – 3:30 PM) Wednesday – (Noon – 5:00 PM)

Select 3rd Saturdays of the month – (8:30 AM – Noon)* Check the Recycling Calendar.

Please keep in mind that we can only take those items that are currently being accepted by the processors of our recycled materials. Placing inappropriate items in the containers based on “hopeful” or “wishful” thinking, defeats the purpose of everyone’s effort, also causing wasted time and contamination of the accepted materials. In some cases, this results in a complete loss of the bin contents, which is unfair to all. Please do your part to stay educated on what we accept and how it is to be prepared for drop off at our center. Also, in the recycling world, “cleaner” (within reason) is always better than dirty.

If you have questions or concerns, please call (724) 770-2064, or ask the recycling technician on duty. We take pride in our county recycling center, one of the very few county-run recycling facilities in Pennsylvania, and we hope you do too!

Accepted items:

Mixed Paper (Green + Yellow “Paper Retriever” bin):

Yes = newsprint, magazines, office paper, phonebooks, paperboard (cereal, tissue, cracker, cake mix boxes, beverage cases), junk mail, phonebooks, hard and softbound books, shredded paper in plastic bag

No = corrugated cardboard, materials in plastic bags (other than shredded paper), plastic wrappers/covers, metal clamps, plastic wrapping paper, paper with food contamination

Corrugated Cardboard (Large dark green bin with “mail slot”):

Yes = flattened corrugated cardboard (look for the “fluted” or corrugated design)

No = paperboard (such as: cereal, tissue, cracker, and cake mix boxes, and beverage cases. These are considered mixed paper), plastic or metal banding, heavy “cardboard” angles, molded “cardboard”, wet or food contaminated material

Glass Bottles and Jars (Small Green Slanted Tip-bin):

Yes = food grade bottles and jars, generally clean and rinsed, any color, labels ok, lids removed

No = window or picture panes, stained glass, Pyrex, Correlle, stoneware, ceramic ware, beer mugs, wine glasses, drinking glasses, glass plates, candle jars, lightbulbs, figurines, decorative glass, tempered glass, light shades

Commingle: (Green Bin located at the rear of white packer truck)

Yes = please clean/rinse the following - aluminum beverage cans, aluminum foil and foil pans, steel and bi-metal cans, plastic bottles and jugs (#1 + #2 on bottom, remove and discard caps)

No = Please do not include other plastics such as #3,4,5,6,7 plastics, 5 gal. buckets, or items with excess food or dirt residue

Scrap Metal: - (Please see recycling technician for assistance)

Yes = misc. iron, steel, aluminum, copper, brass, stainless, rotors, brake drums, shelving, pipes, appliances, electric motors, hot water tanks, tools, lawn mowers (fluids removed)

No = wire hangers, wire fencing, propane/helium tanks, paint cans, aerosol cans, items that are mostly plastic or wood (remove first), freon containing devices

Used Motor Oil: - (Please see recycling technician for assistance)-Please call ahead to see if we have capacity.

Yes = used (or unused) motor oil, hydraulic oil, and transmission fluid

No = brake fluid, oil and gasoline mixture, or accepted oils containing excessive debris or water

Antifreeze: - (Fee applies - please see recycling technician for assistance)

Yes = used (or unused) antifreeze

Electronics (“E-Waste”): – (Please check with our office regarding fees. See recycling technician for assistance. Limit of 2 electronics/per year per County resident) Proof of County residency is required. Please come prepared to demonstrate that you live in Beaver County. No E-waste may be dropped off "on behalf" of someone else. The owner must be present. We reserve the right to suspend this service. Your time is valuable and we appreciate your effort to recycle responsibly, please call the office to before your trip to the Recycling Center.

Yes = Televisions, computer equipment, printers, copiers, VCR/DVD players, stereos, phones, etc.

No = Freon containing items such as freezers, refrigerators, dehumidifiers, AC units (take these to your local scrap yard), smoke alarms. Any E- waste that is damaged or broken.

Yard Waste: - (Fee applies – please see recycling technician for assistance)

Yes = grass, leaves, brush, small twigs and branches, logs 7” or less in diam., Christmas trees

No = plastic bags, lumber, stumps, sod, food wastes